

## Unpainted 3D printed resin kit

### Preparations

- Search the web for more pictures to use as model for the painting. Everything from shiny new condition to a shutdown rusty machine.

Keywords: single chop, taarup



After 3D-printing, the parts have been washed and the supports from the printprocess have been removed. A fine grinding has also been made on the parts to reduce residues and traces of these supports

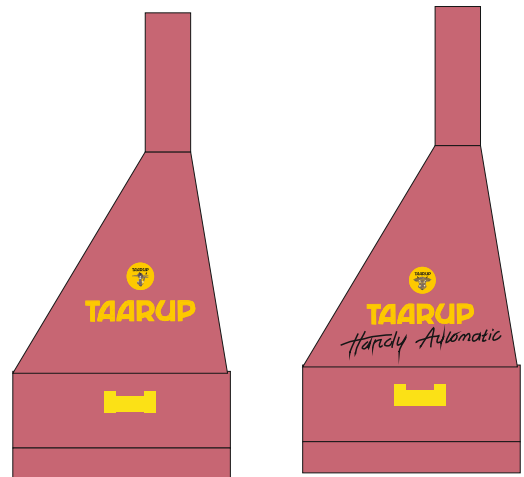
The contact points of the supports leave small peaks, which can be carefully worked with sharp knife (scalpel) and fingertip needle file if there should be some traces left on the model.

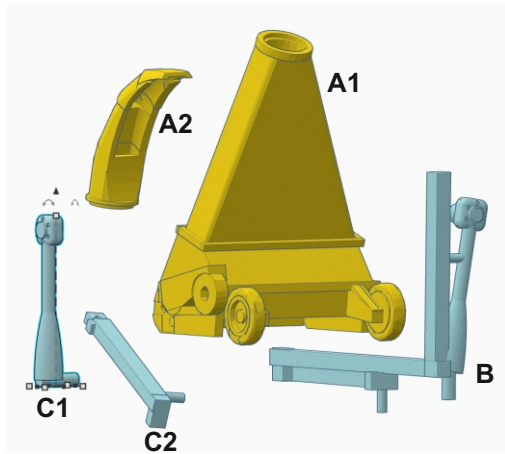
Prime the parts with water-based primer

- Final paint with "tractor red" of your own taste
- Paint with blank clearcoat where decals are to be set

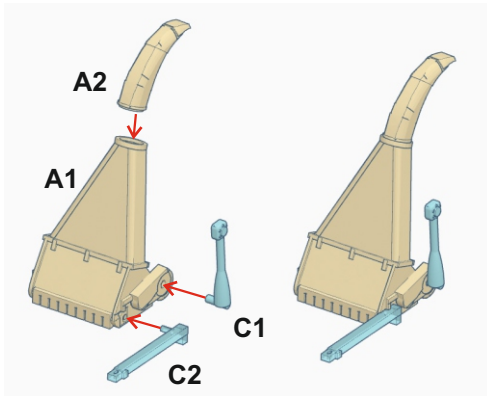
#### - Decal

- Carefully cut a thin cut, right near the decal text  
The cut should only go through the decal film not the entire paper.
  - Then cut the paper a little outside the decal.
  - Soak for about 30 seconds
  - Carefully move the decal text to the model.
- Paint the model with glossy / semi-gloss / matte varnish
- Remove any. color residue in the two mounting holes on the right side of the machine housing
- Install coupling rods according to Figures 3a or 3b.

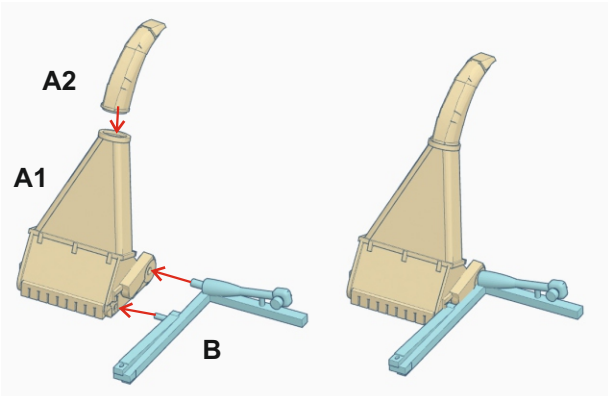




- A1 - Housing
- A2 - Ejector
- B - Coupling rod with drive shaft
- C1 - Driveshaft, single
- C2 - Coupling rod, single



3a) Use parts C1 and C2 when the machine is standing aside, and not on duty



3b) Use part B when the machine is coupled to a tractor