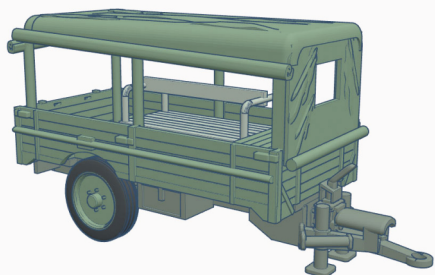


Drivkärra 834

Unpainted resin kit

H0



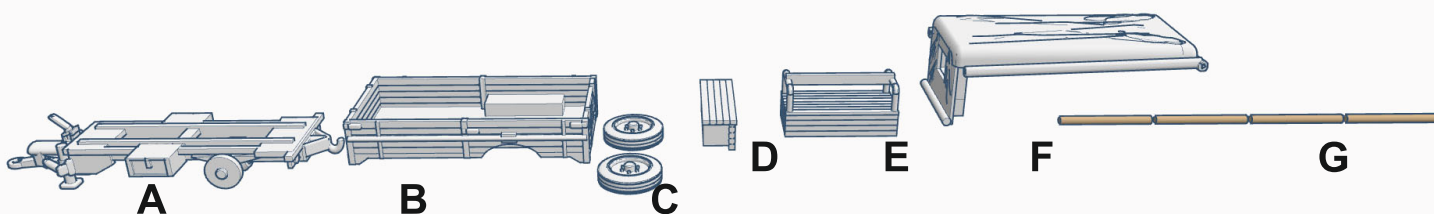
Försvarsmaktens Drivkärra 83 Swedish armed forces' driving cart

3 ton trailer

Manufactured by Lihnelss Vagn AB in Braås

The construction is from the early 1950s and is provided with transmission gears 4 and a drive shaft coupled to the tractor PTO.

Used as a towing vehicle, coupled with tractors, in the infantry's grenade launcher companies to pull 12 cm grenade launchers or in the artillery to pull 10.5 cm howitzers

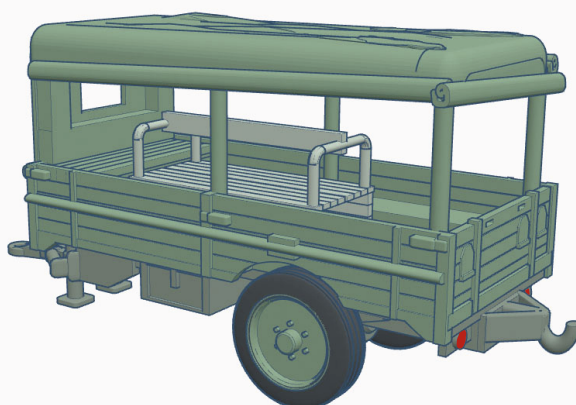


The kit contains:

A: 1 pc Chassis
 B: 1 pc Platform
 C: 1 pair Wheels
 D: 1 st Storage box

E: 1 pc Crew bench
 F: 1 pc Canopy
 G: 1 st Metal wire, 1 mm dia

After 3D-printing, the parts have been washed and a number of the many supports from the print have been removed. A fine grinding has also been made on the tractor frame and the cab reduce residues and traces of these supports. On other parts, there are still some finishing work for the model builder to do, before the parts are ready to be painted and assembled. The contact points of the supports leave small peaks, which can be carefully worked with sharp knife (scalpel) and fingertip needle file.



1) Preparations:

Suitable tools:

- Sharp knife, scalpel or cutter blade
- Small drills or breakers, 0.4-1mm
- Fine needle file
- Fine-grained sandpaper
- Adhesive, liquid fast adhesive fits well

For painting:

- Water-based (acrylic) primer
- Water based paint for colored layers
- Water-based lacquer, glossy / high gloss / matt
- Small brushes
- Airbrush if available.

- Search the web for pictures of the model to find suitable color variations and conditions

1b) Finish parts

- Cut and trim away peaks and protruding residues that remain after the removed supports, in any case, on visible surfaces and surfaces that should be in contact with other details.

2) Painting:

I do recommend painting the parts before assembling the parts so that you get color on all surfaces that later could be difficult to access.

You will get the best result for painting with airbrush, if available.

Brush painting will of course work well if you make sure to keep the paint layers thin

A) Use a water-based acrylic primer

B) When dry, all details can be painted with water based acrylic paint

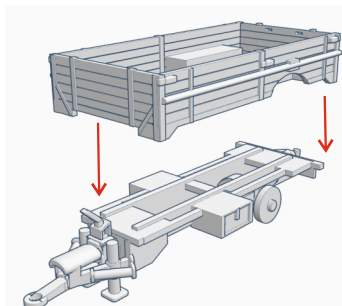
B) The main color of the cart was of course some kind of army-green paint

- All parts, can be painted first with the main color with an airbrush (or by hand with an ordinary brush)
- When the paint has dried, parts that should have different colors can be hand painted with a fine brush

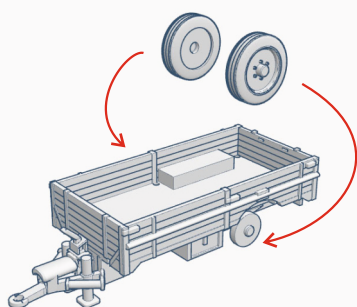
Details:

- The tires are painted black with a muddy color of dirt if desired
- The floor and wood surfaces of the box and the bench top surface can be given a more grayish tone to see the well-worn out
- Taillights on the rear frame beam are painted with a drop of red

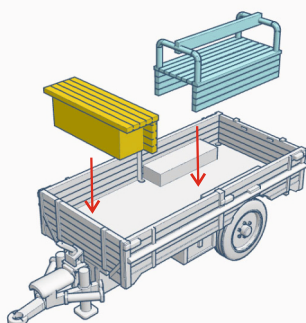
3) Montering av ramverk och flak



- The parts are glued with liquid CA glue
- Fit the longitudinal elevations on the base into the corresponding recess on the underside of the platform

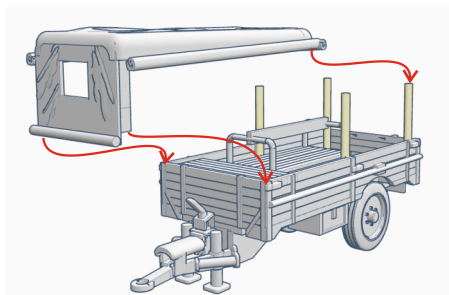
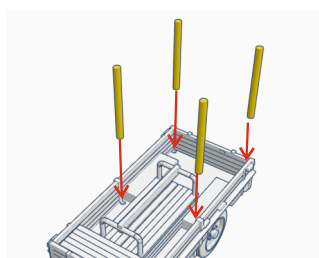


- Glue the wheels to the "brake discs"



- The storage box is glued to the front of the cart
- The crew bench is glued somewhere in the middle of the platform, between the wheelhouses.

4) Installation of canopy



- Cut 4 posts from the supplied metal wire
- They should be about 19 mm long to fit the height of the canopy
- Try-out and fine-tune before mounting
- The posts are glued in recesses in the roof of the chapel and to the sides of the platform.

Assembly instruction

Drivkärra 834

H0

